

PTC Arbortext® Styler™

Create stylesheets to automatically deliver predictable, high-quality product information in multiple languages and media output

PTC Arbortext Styler is an innovative stylesheet tool that enables designers to configure stylesheets for automatic publishing of structured content using a single source of style. The stylesheets you create support one or multiple output media, with-out programming, enabling you to improve the quality and consistency of your information.

Stylesheets created in Arbortext Styler are used by Arbortext publishing software to transform XML content into output for print, PDF, HTML and Web pages, HTML Help, Microsoft® Word® and wireless devices. Arbortext Styler also provides foreign language support including Right to Left, enabling you to easily and automatically layout and publish localized product information.

Benefits

Ensure consistent, high-quality product information

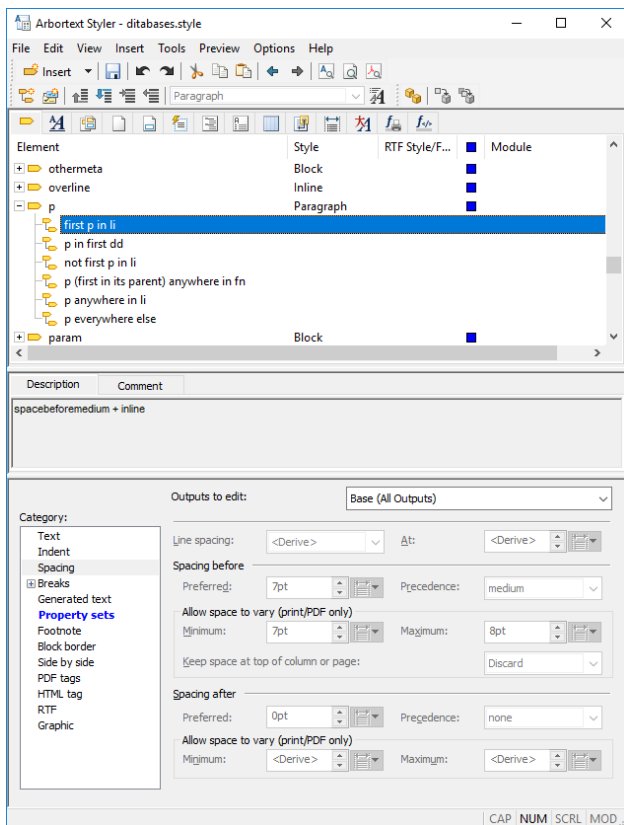
- Develop and enforce stylesheets to automate information layout and delivery
- Publish complex product information to one or multiple media—from the same stylesheet—with-out programming
- Automate layout tasks for multiple language content and regional • formatting specifications

Increase designer productivity and value

- Provide a single, easy-to-use interface for your comprehensive product information delivery requirements
- Simplify stylesheet creation across media to minimize programming
- Update stylesheets easily when requirements change
- Configure stylesheets to support multiple media types and formats automatically

Reduce publishing production costs and cycle times

- Create a single-source of style to eliminate the development, maintenance and disparity of mul-tiple stylesheets
- Eliminate desktop publishing costs for document production
- Extend stylesheets by writing styling criteria for specific output media through source-code edits



Arbortext Styler provides a single, easy-to-use interface for all product information layout requirements to consistently publish high-quality information across multiple media types automatically.

Features

Rapid Stylesheet Creation

- Simplify initial setup with style wizards
- Intuitive user interface
 - Page layout controls include page-size, margins, columns, footnotes and page numbers
 - Tabbed panels for elements, page sets, size definitions, headers and footers, and combined fonts
 - Tabbed sections for applying text formatting for elements, element contexts and conditions
 - Simply create additional contexts and conditions without needing to write XPath expressions or testing code

- Highlight source-code edits
- Enable multiple levels of undo and redo
- Use and track 'property sets' to group together formatting properties into reusable components
- Add comments to stylesheet components to help development and maintenance

Multichannel Support

- Support for multiple output types, such as print, PDF, Web, Microsoft Word and HTML Help, from a single stylesheet
- Define styles for all output types or for a specific output
- Preview content for print, PDF and Web media
- Support for configuring PDF bookmarks and populating PDF document properties
- Enable HTML 'chunking'
 - Split documents during publishing into logical chunks based on document hierarchy
 - Define chunk boundaries and configure tables of contents for chunked outputs in Arbortext Styler
 - Support for DITA by using input file or content management object structure to define the initial chunk boundaries
- Output file metadata for inserting metadata into HTML, chunked HTML, and PDF outputs

Conditional Formatting

- Set up conditional styling based on element context, attribute values and content tests
- Base styling on multi-level conditional tests

Standards Support

- Import of existing FOSI stylesheet
- Export of multiple stylesheet formats, including XSL-HTML, CSS, XSL-FO, and FOSI, and Arbortext Advanced Print Publisher composition engine

Automatically Generated Content

- Format tables of contents, indexes and other automatically generated lists, such as table lists and figure lists
- Enable automatically generated text, including: bullets and list numbers; text preceding or following an element; header/footer content; repeating titles; cross-references; and indexes with language-specific collation rules
- Edit generated content for each entry level to fine tune output
- Add a new section between Automatically Generated Content and Modular.

Multi-language Formatting

- Easily support Right to Left languages by mirroring page lay out definition

- Use multiple numbering schemes to comply with regional numbering rules
- Define combined fonts for getting clearer results when mixing multiple types of characters
- Generated text can be exported as a separate file for easy translation to create multi-language stylesheets

Modular

- Use named property sets for modularity and reuse
- Support for modular stylesheets for sharing common formatting definitions between multiple document types

Extensible

- Modify the style code directly for specialized applications using an extensive mechanism
- Use source edits to provide tight control of output for specific media
- Embed JavaScript custom functions for HTML output

© 2019, PTC Inc. (PTC). All rights reserved. Information described herein is furnished for informational use only, is subject to change without notice, and should not be taken as a guarantee, commitment, condition or offer by PTC. PTC, the PTC logo, Product & Service Advantage, Creo, Elements/Direct, Windchill, Mathcad and all other PTC product names and logos are trademarks or registered trademarks of PTC and/or its subsidiaries in the United States and other countries. All other product or company names are property of their respective owners. The timing of any product release, including any features or functionality, is subject to change at PTC's discretion.